



## HTF T2 HORIZONTAL TRAY FORMER

SWF's HTF T2 Horizontal Tray Formers, powered by TECO, are specifically designed to efficiently fold and glue commonly used cardboard trays for fruits and vegetables. The machine is versatile and can be configured with forming sections for Citrus or P84, or for trays with corner posts without top flaps. Its high productivity, reliability, quick changeover time, and good price-to-quality ratio have made it a popular choice in the market. The machine can also be fitted and retrofitted with short and long side double folding devices for added convenience and flexibility.

# HTF T2 Horizontal Tray Former for Corrugated Board Trays

## FEATURES

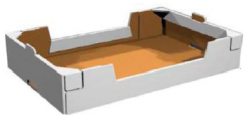
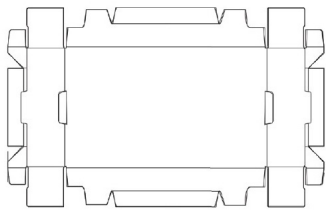
- Maximum flexibility and stability
- Production statistical control
- Low maintenance
- Minimize waste
- Quick changover
- Simple operator interface
- PLC controls
- Polycarbonate interlocked guard package

## AVAILABLE OPTIONS

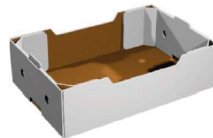
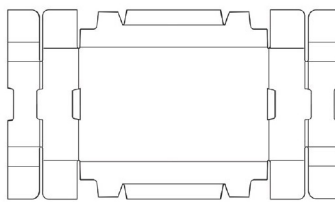
- Operator and material staging platform
- Automatic stacking system for trays
- Roll-over mechanism to create display windows
- Discharge conveyors
- High-capacity hoppers fit various production needs
- Large capacity glue system to reduce filling intervals

Output Speed	Electrical	Air Consumption	Installed Power
Up to 40 trays per minute	480V, 3 Ph, 60 Hz	24 CFM	6.2 Kw

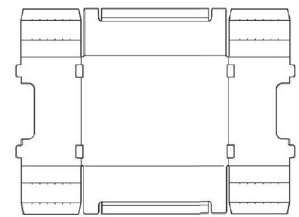
Platform tray



Citrus tray



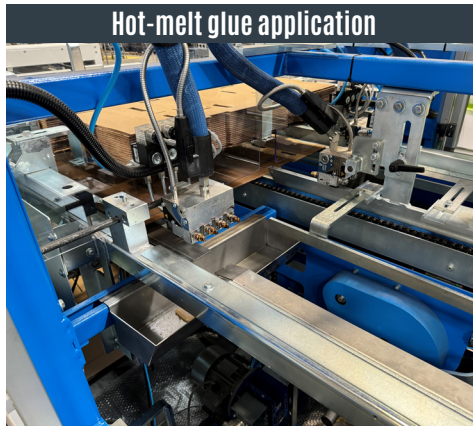
Open Corners tray



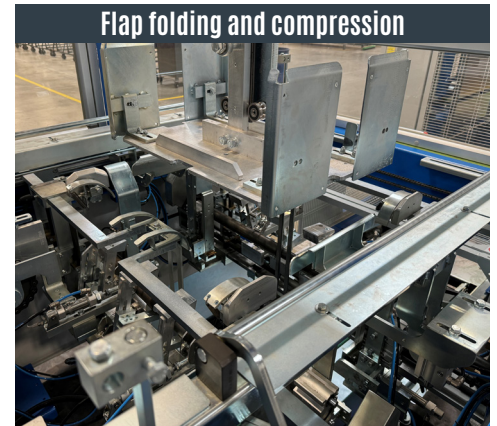
Horizontal magazine



Hot-melt glue application



Flap folding and compression



**Contact** our experienced sales teams today for a comprehensive review of your application(s) and to see how our HTF T2 Horizontal Tray Formers can benefit your company.